

Irwindale



www.AthensServices.com



**Important Information Regarding
Your Trash and Recycling Service**



Your Guide to
**Residential Waste Collection
& Recycling in the
City of Irwindale**



www.AthensServices.Com

IMPORTANT FACTS

We are happy to serve you. The following guidelines are provided to assure that you receive the full benefit of your solid waste management service.

COLLECTION LOCATION AND TIME

You will receive two (2) green automated containers in which you can put all of your trash and recyclables. However, you may order as many containers as you require and have existing containers repaired or replaced by calling the City at (626) 430-2211. Please place your containers at the curb by 6:00 a.m. on Friday. Trash will not be removed from personal barrels or in bags beside the container and all trash must be inside the containers. (Nothing should ever be placed on top of or stick out of the container.)

Please allow one foot (1') of space between the containers to allow the automated sanitation truck adequate room to service them safely and efficiently. Additionally, please make sure the containers are at least three feet (3') from any vehicles or other obstructions.



Athens Services, in cooperation with the City of Irwindale, provides services for the Spring and Fall Clean-up Campaigns for the disposal of residential bulky items. The City will notify residents by mail of the dates.

RECYCLING PROGRAM

NO MORE TRASH SORTING! Athens has implemented a program to help Irwindale achieve the waste reduction mandates set by California's tough waste management law, AB939.

This program saves you time and effort. You no longer need to sort out your recyclables. Your entire waste stream is taken to the Athens Material Recovery Facility where your recyclable materials are retrieved from the trash and diverted away from local landfills.

Please visit our web site, www.AthensServices.com for more information about our many other services!

HOLIDAY COLLECTION SCHEDULE

We observe the following holidays: New Year's Day, Memorial Day, July Fourth, Labor Day, Thanksgiving and Christmas. Your pickup will be delayed by one day on holiday weeks.

HOLIDAY TREE RECYCLING

TREES ARE 100% RECYCLABLE!

Athens Services collects Holiday Trees on your normal pickup day from the day after Christmas through the second week of January each year.

Please remove stands, nails, ornaments, lights, and tinsel, and place the trees next to your regular trash containers. Trees with flocking or fire retardant ARE acceptable. Trees over 6 feet in length must be cut in half. If you miss the date for recycling, please cut up your tree and place it in your yard waste container(s).

HAZARDOUS WASTE

To avoid an interruption of your service, please do not place hazardous materials into your trash. If hazardous

waste is identified, it will be tagged and not collected.

Most paints, pesticides, herbicides, and petroleum derivatives such as motor oil and solvents are considered hazardous wastes. Any materials that are flammable, poisonous, or explosive are not allowed in the trash. This includes pool chemicals and antifreeze.

All electronic waste, such as televisions, computers, cell phones, radios, microwave ovens, fluorescent light tubes, all types of batteries, and other items such as thermometers, thermostats, and anything that contains mercury are not allowed in your trash. Compressed gas cylinders, such as propane tanks, full or empty, are not acceptable.

Needles and other sharps generated in home health care are not allowed in the trash. Although tires are not considered hazardous, *per se*, they are also banned from your trash.

State and Federal laws require special handling for these wastes and there are periodic L.A. County Hazardous Waste Round Ups for proper disposal of hazardous materials. For more details, please call the HAZWASTE HOTLINE at (888) CLEAN-LA or go to www.AthensServices.com.

Please refer to the storyboard below for a more detailed explanation of the program



1
Trash collected is dumped onto the Tipping Floor and...



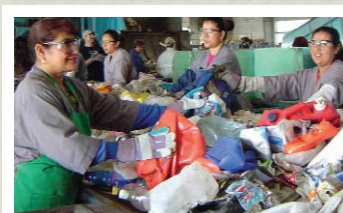
4
Once sorted, recyclable materials are moved via conveyer...



2
...moved with heavy equipment onto the Walking Floors toward...



5
...to the massive baler, where they are prepared for...



3
...the processing equipment where employees and machines will sort out the recyclables.



6
...shipment to foreign and domestic markets.